



HiTAC - October 2018

Hi Folks, welcome to the latest issue of the HiTAC.

Comments / opinion and content can be forwarded to Hitac.tac@outlook.com

[View this email in your browser](#)

From the President's Desk



Just a reminder that the feature event for October club night is the Open Climb induction. Attendance is essential for all of those club members who would like to help out with the Open Climb on Saturday 16 February 2019. Every three years our Open Climb Safety Plan is audited by OutdoorsMark, and that audit is currently in progress. Following the induction we'll view a screening of the movie "Mountain" (2017) an absolutely top movie.

With the downstairs renovation of Tahurangi Lodge commencing on 1 October, all downstairs locker holders should by now have emptied their locker and left it unlocked. The upgrade project will be needing plenty of volunteer help from club members. Any time you can contribute to the project will be hugely appreciated. Please contact Project Volunteer Co-ordinator John Thomason to advise of your availability, see details elsewhere in this newsletter.

With summer weather just around the corner, it won't be long before the DOC huts get busy. If you are interested in assisting as a volunteer Hut Warden over the summer period get in touch with DOC staff at the Rimu Street office.

As mentioned last month, the club Photo Competition will feature at our December club night. See elsewhere in this HiTAC for all the info you need to prepare your entries.

Elaine Sinton

President

Photo Competition 2018

Our annual photo competition will take place at the December club night.

Entries can be submitted from 1st October. Last day for entries is Sunday 18 November – please don't be late!!!

Please ensure you meet the criteria as outlined below.

Please note instructions for file name and file size, and ensure you follow the example given!

Image Format:

Sized between 1MB and 5 MB

Saved as a JPEG or JPG file

All images must be digital

Submitting Images:

Email to president.tac@outlook.com

File Name:

Must start with the Category Code, then TAC, followed by the Caption, in that order
e.g. "ABN TAC Frozen Aoraki.jpeg"

The categories for the 2018 competition (to align to FMC) are:

ABOVE BUSHLINE (With no Human Element), Cat Code: ABN

ABOVE BUSHLINE (With a Human Element), Cat Code: ABW

BELOW BUSHLINE (With no Human Element), Cat Code: BBN

BELOW BUSHLINE (With a Human Element), Cat Code: BBW

HISTORIC Code: HIS

NATIVE FLORA & FAUNA, Cat Code: NFF

HUMOUR, Cat Code: HUM

Conditions of Entry:

Adjustments for exposure, white balance, contrast & levels are allowed.

Cropping is allowed

Stitching for panoramic shots is allowed

Removal or insertion of features not in the original image is not allowed.

Entries for the contemporary categories must be taken after 1 Jan 2016. Any photos taken prior to this date will automatically be entered into the historic category.

What defines a "Human Element"?

"The definition of what is a "Human Element" is flexible but the general intention is: Where the photo contains as anything other than as a very minor feature: people, a hut, a track sign/marker, bridge, ice axe and anything else that has been introduced by humans into the environment then we would define that as having "a Human element". But if a photo has what could be called a Human Element but that element is very small, inconsequential and not a feature in the photo then you could count it as "No Human Element".

Multiple entries per category are allowed

The winning entries in each category will be submitted to the national FMC Photo Competition (where eligible).

Photo's taken outside of the New Zealand Exclusive Economic Zone (i.e. North Is, South Is, Stewart, Chatham, Kermadec, Sub-Antarctic) are permitted for the TAC competition, but are not permitted for the FMC competition

The humour section is TAC only (not FMC)

Entries Close Sunday 18 November

MOVIE - The Dawn Wall

4th Wall Theatre

<http://www.4thwalltheatre.co.nz/onat4thwall/whats-on/the-dawn-wall.html>

<https://www.facebook.com/events/613665699030490/>

The Dawn Wall

Showing 7:30pm 26th October 2018 at the 4th Wall Theatre

All tickets \$18 from www.4thwalltheatre.co.nz

In January, 2015, American rock climbers Tommy Caldwell and Kevin Jorgeson captivated the world with their effort to climb The Dawn Wall, a seemingly impossible 3,000 foot rock face in Yosemite National Park, California. The pair lived on the sheer vertical cliff for weeks, igniting a frenzy of global media attention. But for Tommy Caldwell, The Dawn Wall was much more than just a climb.

It was the culmination of a lifetime defined by overcoming obstacles. At the age of 22, the climbing prodigy was taken hostage by rebels in Kyrgyzstan. Shortly after, he lost his index finger in an accident, but resolved to come back stronger.

When his marriage fell apart, he escaped the pain by fixating on the extraordinary goal of free climbing The Dawn Wall. Blurring the line between dedication and obsession, Caldwell and his partner Jorgeson spend six years meticulously plotting and practicing their route. On the final attempt, with the world watching, Caldwell is faced with a moment of truth. Should he abandon his partner to fulfill his ultimate dream, or risk his own success for the sake of their friendship?

Boots for Sale

!!Boots for sale!!

Lyn White has some leather Asolo boots for sale

Wrong size purchased and they are a tad small [usually wears a size 37-38 shoe]

Have had two trips to the Taurangi Lodge and gave her blisters both times

Size EU 39 and 1/3, UK 6, Cm 25, USA 7.5

They retail for \$450

Price negotiable - can be test driven if required

Mobile or text 027 444 9800

Home 06 7588080

Old Climbing Gear Looking for a New Home

Collector's Items from the 1960's and 70's

Past member of NZ Alpine Club and also Stratford Mountain Club, Rex Vickers, has recently passed away. Rex had a large collection of old climbing gear dating from the 1960's and 70's which his family would like to donate to anyone who collects such items. Some items have already been distributed to NZAC members, however there are still some old primuses, harnesses which have never been used, and other miscellaneous items. As stated, Rex's family wish these items to be donated to those people who have an interest in historic climbing gear. Please contact me promptly if you would like any of this gear.

Elaine Sinton

Club President

Ph 755-0977

Update on the Taurangi Lodge

Downstairs Renovation Project

As soon as the track to Taurangi Lodge is sufficiently clear of snow/ice, we will be starting the major renovation works to the downstairs of the Lodge. Below are some important pieces of information for you – please take note! The next few HiTACs will report progress & photos of how it's all going 😊

1. Downstairs Lockers. Should have been emptied, cleaned & left unlocked by 30 September.

- If you didn't get a chance to empty your locker, the project team will now need to do this and will not be held responsible for your belongings. New lockers will be installed during approx. December & allocated in the new year. Please address any queries on this to Charlie Andrews at hitac.tac@outlook.com.

2. We need your help - we're looking for volunteers!

- If you would like to help us with painting/varnishing, digging, carrying materials to/from Translator, helping with demolition during October, November, December then please contact our Project Volunteer Coordinator John Thomason asap at johnthomason242@gmail.com with the following info. John will then contact you directly.
 - Your name
 - What you would like to help with (see the above activities)
 - Whether you can help on weekdays and/or weekends and how much notice you need

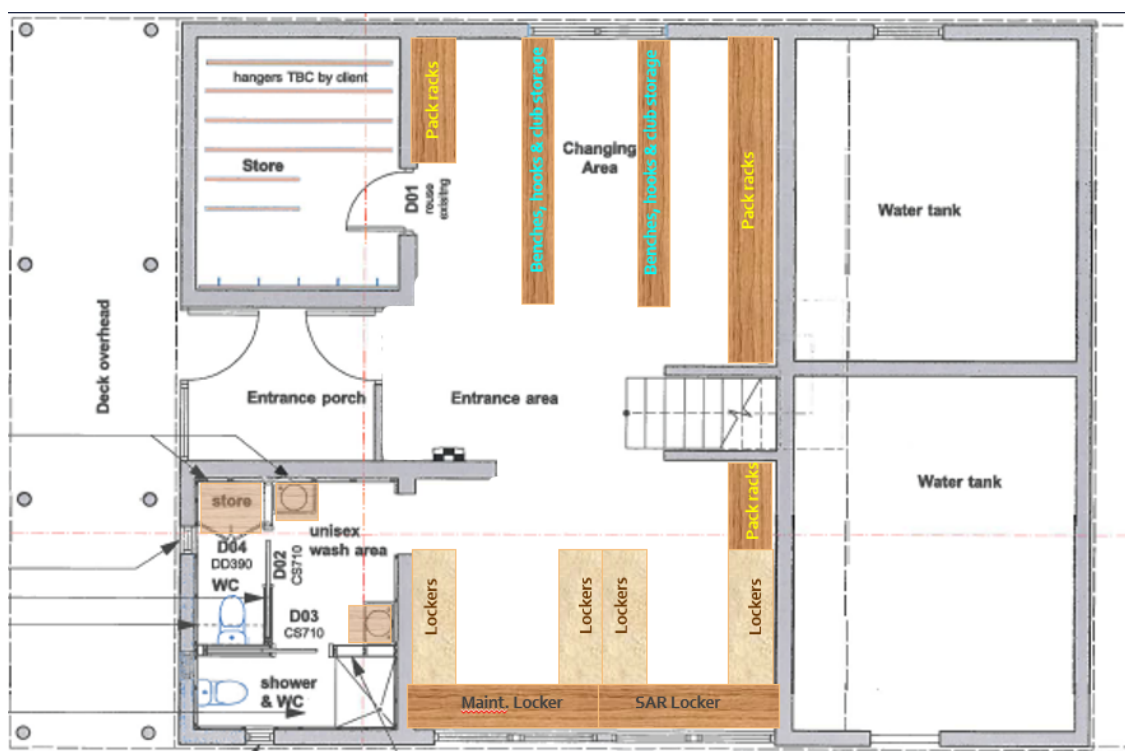
Your contact number
 We may be able to provide transport from North Egmont car park to the Lodge – this is pending
 TWD & driver availability – please state whether you would be happy to walk to the Lodge or
 would only volunteer if we can provide the transport

Even if just a few hours, we would be VERY GRATEFUL for your time! ☺

3. Lodge access & facilities during October & November will be limited as follows:

- Members may use the lodge during the day and/or overnight, however please bear in mind the below constraints.
- Non-members will not be granted overnight stays. Access during the day will be at the discretion of the project / construction team.
- One bunk room and all of the upstairs will remain fully functional. Power & water may be off for very short periods of time.
- At least one toilet and one sink will be available. The shower may be available.
- The dry room will not be available (from early October until mid-December).
- Places to put, hang, store gear & boots will not be available most of the time. A small area will be made available whenever possible, however this will be severely limited. Lockers will also not be available.
- The construction team will ensure safe access in/out of the lodge – please follow instructions from them and on any notices/posters for your and their safety at all times.

The project will greatly enhance and extend the life of the club's biggest asset by improving and upgrading the downstairs layout, reducing future maintenance, and providing a new bathroom, more effective drying room, better gear storage and new lockers. Construction will take place from early October through to December. Many of our club members are taking part in this project and without their hard work & dedication this project would not be possible – THANK YOU to all involved! The total cost of this major project for the club is \$125,000. Over 60% of the funds have been very kindly granted from TSB (\$50,000), New Zealand Community Trust (\$20,000) and Taranaki Electricity Trust (\$10,000). TAC is contributing the remaining \$45,000. Below is a sketch of the new downstairs layout.....



Club Nights

PLEASE NOTE Club nights start at 7:30pm
 First Thursday of each month, at the Foundation for the Blind rooms,
 131 Vivian St, New Plymouth

October 4th

Open Climb Induction evening and Mountain Movie.



November 1st
John Jordan on his time in Alaska

December 5th
Photo Comp & end of year shout.

Club Trips

Our club trips aim to give you the opportunity to practice your alpine & mountaineering skills, get to know Mt Taranaki (and in some cases other awesome NZ mountains), meet other like-minded people and, have some laughs!

It is important to note that our club trips are not instruction courses or formal guided events. Our Trip Leads are experienced club members who kindly volunteer their time to share a route they know reasonably well and meet the above trip aims. Each trip participant is expected to be self-sufficient on the mountain, have the skills to undertake the trip, know the gear to bring and, participate under their own risk and responsibility.

Our trips are of course also weather/conditions dependent. Where possible we try to have a reserve date in case weather changes things. We do not charge for our trips although everyone pays for their own gear, equipment, transport, fuel, food, and in some cases accommodation. If we stay anywhere other than Taurangi Lodge we'll suggest a preferred option as it's always great if everyone stays at the same place.

Special note for winter trips in snow/ice conditions. These trips are for club members who have completed at least Snow Craft 1 (or equivalent). If you need to hire equipment please do so in advance via TAC Gears Officer (contact details at end of this HiTAC and on our www).

If you're interested in coming on any of the below trips, or would like to lead a trip, please contact Trips Coordinator Sophie Tucker on committee2.tac@outlook.com for further details. Be sure to keep an eye on our facebook page for trip updates too!

Upcoming Club Trips...

Welcome to our winter/spring trips programme! A huge thanks is extended to those of our experienced club members who have so far offered to lead & assist some of our trips 😊

Saturday half day 'buddy walks' – the last two!

Mt Taranaki buddy walks on slopes near Tahurangi Lodge – places available

- Are you new to winter mountaineering and don't quite know how, when or where to improve your winter skills? Our buddy walks can help you!
- Our buddy walks help fill two key gaps for those who are pretty new to winter mountaineering, namely acquiring skills and being able to safely climb / walk on Taranaki's winter white stuff and, getting to know others to be out there with.
- The buddy walks are informal, friendly and typically aimed at those wishing to improve their beginner/basic snow travel skills (ice axe, crampons, weather/snow conditions assessment, different terrain/slopes, maybe simple pitching) with a more experienced person.
- Each buddy walk will be a few hours morning walk within easy distance of Tahurangi Lodge and very much tailored to what the group want to practice and their current skill level. You will also start to get to know others that you can meet up the mountain with.
- The emphasis is on Buddy, i.e. the Buddy does not take complete responsibility for participant's safety. The Buddy is there to help participants make mutually agreed reasoned risk judgements.
- Group sizes are small and available on the following dates:
 - o Saturday 13th October 2018
 - o Saturday 27th October 2018

If you're keen, please contact Club Trips Coordinator Sophie (committee2.tac@outlook.com) for further details no later than the Tuesday before the buddy walk date you are interested in.

TBC October / November 2018 – day trip

Mt Taranaki slush summit

If you have recently completed Snowcraft 1 with us, then this is the perfect trip for you! We specifically wait for suitable slush' conditions for this trip to enable those who have recently completed Snowcraft 1 to have the opportunity to summit Mt Taranaki in 'beginner' conditions. Because we wait for just the right conditions, it is likely the date will be announced at short notice and may not make a HiTAC edition. If you attended Snowcraft 1 this year you will be issued an email once the date is announced; our TAC facebook page will also be updated so please keep an eye out!

Please contact Club Captain Chris (captain.tac@outlook.com) for further details.

November Sat 24th - Sun 25th

Fanthams & Kapuni Lodge overnighter

This trip will include an overnight at Kapuni Lodge with some climbing up & around Fanthams somewhere.

A \$10 members fee is applicable to stay at Kapuni Lodge. Further details to be announced in our next HiTAC!

Summer & Autumn 2019 club trips

Trips planning for summer & autumn 2019 is now underway woo hoooo! Watch this space.....

New Members

We welcome these new members to the Club, and look forward to seeing them on the Mountain.

Hayden Foster
Alexandra Moser & Peter Smith
Alexander Finch & Rachel Standring
Christianne, Thomas, Yannick, Joep Eberhard
Tony Clow

Bell Block
New Plymouth
New Plymouth
New Plymouth
judea, Tauranga

Members Trips ...

More Stunning Pictures from Glen Hodges



Club Information

This is the TAC's premier Lodge on Mt Egmont / Taranaki. It sleeps 24, has electric heating and cooking, all cutlery, pots and pans, etc. Just like home. Members can request an eKey by completing the application available from the Club's website.

Overnight fees are \$45 for non-members. Members free. Anyone who stays at Tahurangi Lodge must write in the overnight book upstairs by the fridge;

1. Their surname and initials.
2. Say TAC or non-member.

Bookings by non-members or members taking a group of 5+ people should be made with the Lodge Booking Officer, or by booking online via the Club's website. The lodge subcommittee looks after all maintenance. Contact the Lodge committee if you want to help, have ideas for improvements, or have found something wrong. If you find you can't get into the Lodge because of an eKey failure or you have locked yourself out etc., phone either the Club President, or the Lodge Booking Officer. Contact info on Web page. They may be able to help by supplying the current access code.

<http://www.taranakialpineclub.co.nz/pages/contacts.html>

SUBSCRIPTIONS

Annual subscriptions are set at the Annual General Meeting.

Subscriptions for 2017: FAMILY \$65, ORDINARY (single) \$45, STUDENT (under 18), \$35. The subscription halves for those joining after September 1st. For more info contact the Treasurer.

Enquiries to : treasurer.tac@outlook.com

Members with unpaid subs at end of April are sent an account overdue notice. If still unpaid by 1st June incur a penalty of 20%. Any members with unpaid subs at 1st July are removed from membership.

GEAR HIRE

TAC Equipment Officer:

The following equipment is available for hire by TAC Club Members:

Ice axes, ice hammers, helmets, harness (incl. karabiners, etc.). Each item costs \$5/day or a maximum of \$10/day for 2 or more items per person. Return the gear promptly after use and you only pay for the days you actually used it. Return it late and risk paying for the complete period; your choice. A PLB (Personal Locator Beacon) is also available for hire and great for back country tramping or alpine climbing. We also have (new) 6mm Prussic Cord for sale to club members at \$2 per meter. Contact the Equipment Officer AT LEAST 2 days in advance to ensure availability.

EVENTS PROGRAMME

Club nights, trips, instruction and social events are all important functions of the Club's Activities – they need both support from participants as well as volunteers to lead them. If you have suggestions for club nights contact the Club Captain, or would like to volunteer to lead a trip contact the Trips co-ordinator.

HiTAC— Newsletter

A monthly newsletter emailed out to club members with an email address. Also available via the Clubs website www.taranakialpineclub.co.nz

Any trip reports, events, gear for sale can be sent to the Editor at hitac.tac@outlook.com

CHANGE OF ADDRESS

Must be advised in writing – Send to the Secretary by mail to:

Taranaki Alpine Club, PO Box 356, New Plymouth,

or email secretary.tac@outlook.com

Club Links

- [Club Homepage](#)
- [Lodge & Bookings](#)
- [Club Contacts](#)

Want to change how you receive these emails?

You can [update your preferences](#) or [unsubscribe from this list](#)

